

TrueNAS® Mini X+ Basic Setup Guide

3rd Generation

v.25111



Contents

1 Introduction	1
2 System Overview	2
3 Hard Drives	3
3.1 Removing Drive Trays	3
3.2 Removing Drive Fillers	4
3.3 Installing Drives and Trays	5
3.4 3.5" to 2.5" SSD Adapters	6
4 SSD Drives	7
5 Network and Power Cables	8
5.1 Powering on the TrueNAS Mini X+	8
5.2 Notice: High Draw USB Devices	8
6 Console Setup	9
7 TrueNAS Web Interface	10
7.1 Connect to the TrueNAS Interface	10
7.2 Out-of-Band-Management	10
7.3 Change TrueNAS Versions	10
8 Additional Resources	11
9 Contact Us	12



WARNING

The TrueNAS Mini products use a Closed Cap style CMOS battery, which is a non-consumer replaceable part due to regulatory requirements. Replacement should be performed by a qualified individual in a child-free environment. Contact our support services via support@truenas.com if replacement is needed.

- Remove and immediately recycle or dispose of used batteries according to local regulations and keep them away from children. Do NOT dispose of batteries in household trash or incinerate them.
- Even used batteries may cause severe injury or death.
- Call a local poison control center for treatment information.
- Compatible Battery type (CR2032).
- Nominal Voltage of 3V.
- Non-rechargeable batteries are not to be recharged.
- Do not force recharge, disassemble, heat above (Manufacturer's specified temperature rating) or incinerate. Doing so may result in injury due to venting, leaking or explosion resulting in chemical burns.

1 Introduction

Mini X+ Specifications

Dimensions (H x W x L)	9.45 in x 8.27 in x 11 in (240 mm x 210 mm x 279.4 mm)
Net Weight (Fully Loaded)	15 lbs (6.8 kg)
Operating Temperature	32°F - 104°F (0°C - 40°C)
Non-Operating Temperature	-4°F - 140°F (-20°C - 60°C)
Operating Humidity (non-condensing)	10% - 85%
Supply Voltage	100-240VAC, 10-5A 50-60 Hz

Compliance



MODEL NAME:

TrueNAS Model Mini X+

VOLTAGE: 100-240VAC
Current 10-5A Max

FREQUENCY: 50/60Hz

This device complies with Part 15 of the FCC rules. Operation is subject to the following two conditions: (1) This device may not cause harmful interference. (2) This device must accept any interference received, including interference that may cause undesired operation. 警語: 為避免電磁干擾, 本產品不應安裝或使用於住宅環境。

CAN ICES-3 (A) / NMB-3 (A)

WARNING: To remove all hazardous voltages, disconnect all power cords.



CONTACT: support@Truenas.com | www.truenas.com | 1-866-TRUENAS

The TrueNAS Mini X+ is a network storage servers intended for use in home, home-lab, and small office environments.

The apparatus is designed to be operated:

- In indoor residential or office environments, within the specified ranges for temperature, humidity, and supply voltage
- In properly grounded electrical installations, in accordance with local electrical codes
- On a stable, well-ventilated surface or shelf, with unobstructed airflow around the chassis
- In accordance with the TrueNAS software documentation, including configuration, operation, and maintenance instructions

This product is not designed or intended for:

- Use in professional or industrial environments with demanding environmental conditions (e.g., heavy vibration, conductive dust, or exposure to chemicals)
- Use in situations requiring specialized environmental controls (e.g., clean rooms, high-temperature, or high-humidity installations)
- Any application outside the conditions and purposes described in this manual and the TrueNAS software documentation

For detailed configuration and operational guidance, refer to the TrueNAS software documentation provided with the product and available from TrueNAS.

The Mini X+ is FCC/CE-marked and complies with:

- **FCC 47 CFR Part 15, Class A** - Radiated and conducted emissions limits for commercial IT equipment (EMI/EMC)
- **Low Voltage Directive (LVD) 2014/35/EU** - Electrical safety
- **Electromagnetic Compatibility (EMC) Directive 2014/30/EU** - Electromagnetic interference and immunity
- **RoHS Directive 2011/65/EU, as amended by (EU) 2015/863** - Restriction of hazardous substances
- **WEEE Directive 2012/19/EU** - Waste electrical and electronic equipment

For regulatory or compliance-related queries, contact compliance@truenas.com.

EU Authorized Representative: Obelis S.A. - Boulevard Général Wahis 53, B-1030 Brussels, BELGIUM

ⓘ Important - Battery Information

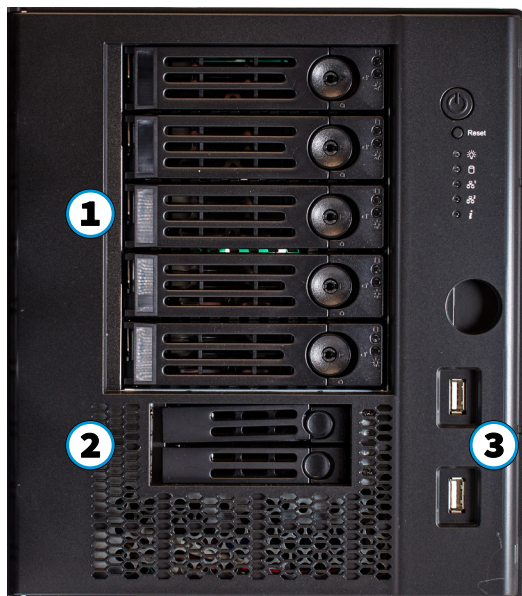
This product contains a lithium coin cell (CMOS battery) used to maintain system settings. Do not dispose of the battery with household waste. Used batteries must be collected and disposed of separately in accordance with local regulations and the EU Battery Directive 2006/66/EC. The crossed-out wheeled bin symbol indicates that the battery must be taken to an appropriate collection facility for recycling.

2 System Overview

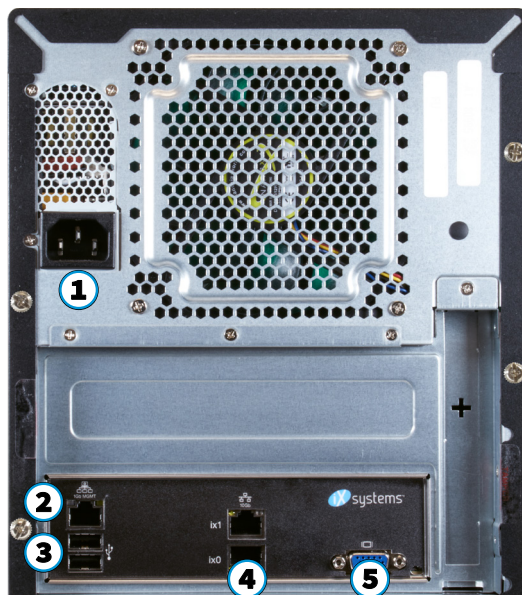
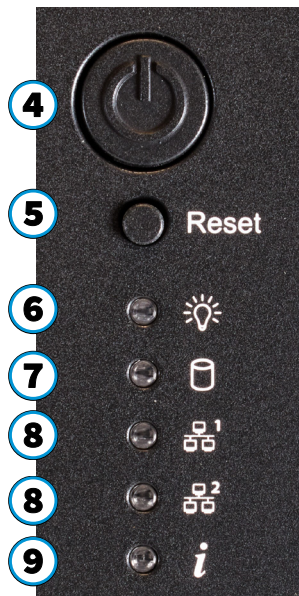
TrueNAS units are carefully packed and shipped with trusted carriers to arrive in perfect condition. If there is any shipping damage or missing parts, please take photos and contact TrueNAS Support immediately at support@truenas.com, 1-855-GREP4-iX (1-855-473-7449), or 1-408-943-4100.

Please locate and record the hardware serial numbers on the back of each chassis for quick reference.

Carefully unpack the shipping boxes and locate these components:



1. Five 3.5" drive bays, 2.5" drive adapters are optional.
2. Two 2.5" drive bays
3. Two USB 3.0 ports
4. Power Button
5. Reset Button
6. Power Indicator
7. Disk Activity Light
8. Network Activity Indicators
9. Unit Identification Indicator



1. Power Connector
2. IPMI out of band management port
3. Two USB 3.0 ports
4. Two 10 GbE network ports
5. VGA connector



1. Five 3.5" drive trays
2. Two 2.5" drive trays and screws
3. Two Ethernet cables
4. One bag of 3.5" HDD screws
5. One power cord
6. One set of keys

3 Hard Drives

The TrueNAS Mini X+ supports TrueNAS-qualified HDDs and SSDs and requires drives designed for Network Attached Storage (NAS). These drives run cooler and quieter than desktop drives.

Please see the **Drive Compatibility List** available on <https://www.truenas.com/truenas-mini1>.

When ordered without hard drives, drive trays ship with protective filler inserts. If you don't fill all bays with hard drives, keep the fillers in the empty trays to protect them.

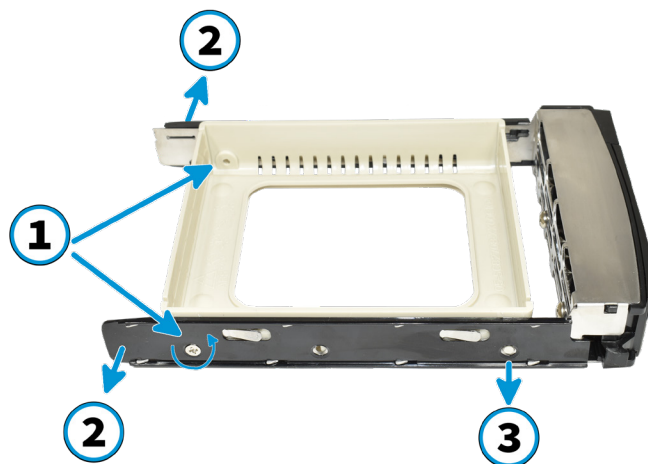
3.1 Removing Drive Trays

If you must remove a drive tray, release the latch by pushing the large circular button to the right. Swing the latch to the left to eject the tray, then pull outwards on the latch to begin sliding the tray out. Grip the top and bottom of the tray and gently remove it.



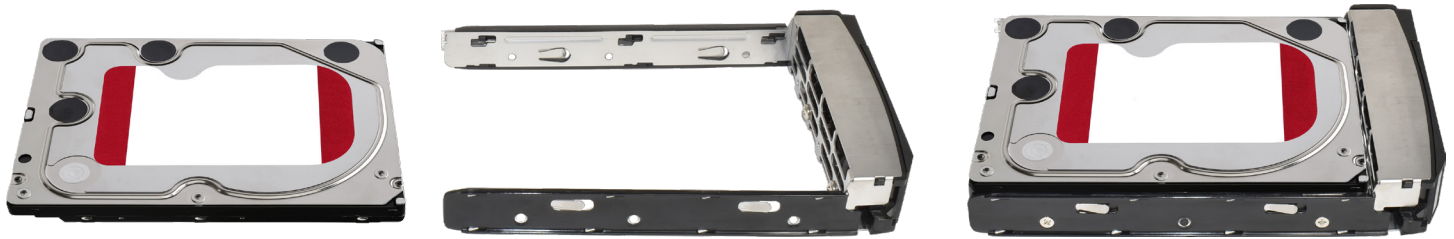
3.2 Removing Drive Fillers

To mount a hard drive in a tray, remove the two rear screws holding the filler (1). Gently spread both sides of the tray away from the filler (2) until the pins release (3), then remove the filler.



3.3 Installing Drives and Trays

Place the hard drive into the tray and mount it with four screws.



Starting with the top bay, gently insert a drive tray until it stops, then swing the latch closed until it locks. Repeat for all hard drives. Load trays with fillers into empty bays.



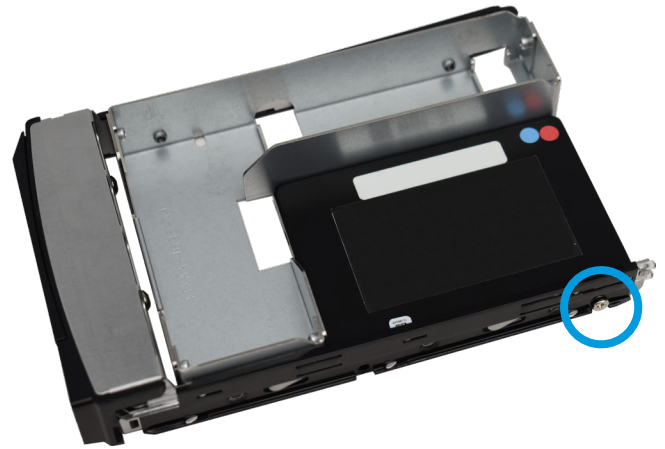
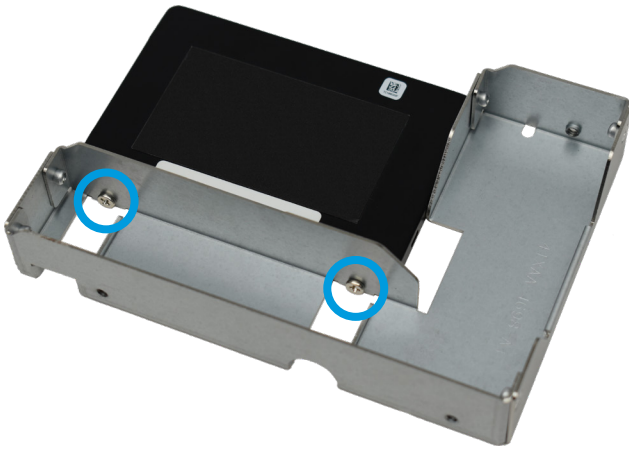
You can lock the drive tray release latches to prevent tray removal. The tray button is unlocked when the inner slot is horizontal and locked when the slot is vertical. To lock a tray, insert a flat-head screwdriver into the slot in the center of the button and turn it ninety degrees clockwise until the slot is vertical.



3.4 3.5" to 2.5" SSD Adapters

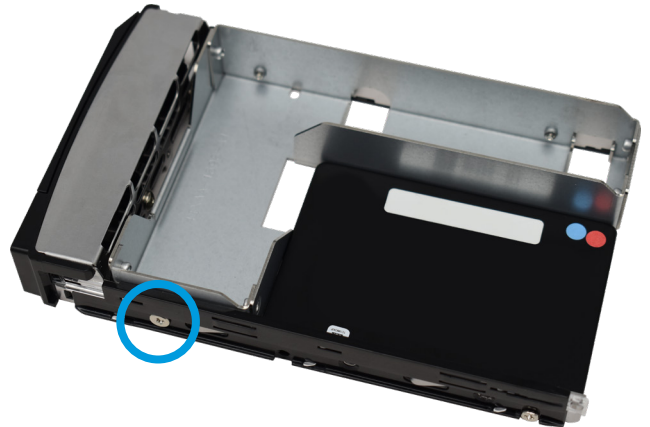
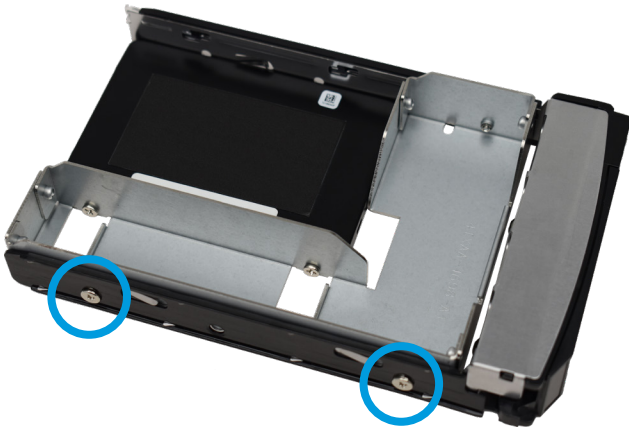
Users can convert 3.5" hard drive trays into 2.5" SSD trays using adapters.

Attach an SSD to the adapter using two of the M3 screws that came with the adapter. Ensure the SSD connector faces outside the adapter. Place the adapter in a drive tray and use the last M3 screw to secure the SSD to the tray.



Use three HDD screws (#6-32*L5) to completely attach the adapter and SSD to the drive tray.

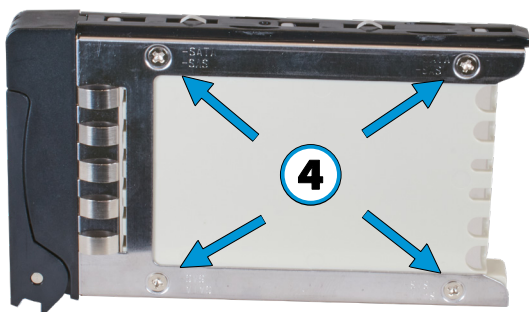
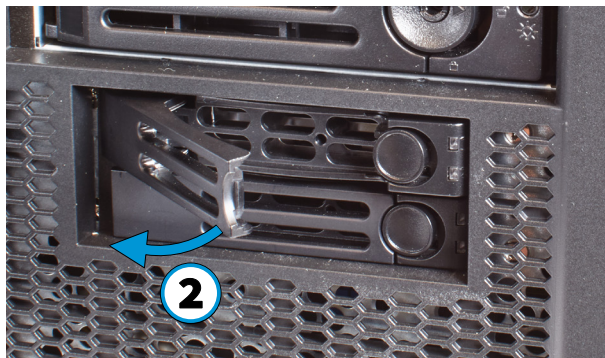
To install the tray into the system, follow the instructions in section 2. Make sure you have attached the SSD to the adapter with the prongs facing toward the system bay.



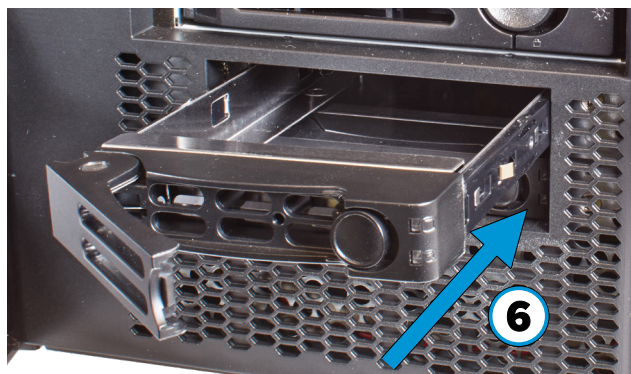
4 SSD Drives

The Mini X+ has two 2.5" drive bays.

To remove the tray, release the latch by sliding the button to the left. Gently swing the latch to the right, then slide the tray out. Remove the filler tray from the drive tray by removing the screws. Place the drive in the tray and secure the drive to the tray with the provided screws.



Follow the same process for both drive trays. To reinsert a tray, gently insert the tray into the bay until it stops and the latch is nearly shut. Swing the latch closed until it locks.



5 Network and Power Cables

Connect the network cable to the router or switch and to a gigabit networking port. Plug the power cable into the TrueNAS Mini X+ and a power outlet.



5.1 Powering on the TrueNAS Mini X+

The Power and Reset buttons control the power state of the TrueNAS Mini X+. These buttons behave in the same manner as standard PC power and reset buttons. When the system is off, pressing the power button will turn the system on. Pressing and holding the power button while the system runs will perform a hard power off. The reset button will reboot the system.

By default, the Mini X+ will power on as soon as you plug the cable into a live power source and, in the event of power loss, power on whenever power restores.

⚡ Warning - Grounded Connection

Always connect power cords to properly grounded connections.

5.2 Notice: High Draw USB Devices

ⓘ Important - Power Draw

The current draw on the Mini power supply's +5Vsb line can exceed specifications if high-draw USB devices are left attached to the rear USB ports when the Mini is powered off.

Unplug high-draw devices (such as bus-powered USB hard drives) before powering off your Mini.

6 Console Setup

You can connect a VGA monitor and USB keyboard for console access, but they are not required. If a monitor and keyboard are attached, you can see the Console Setup Menu. For more details about the Console options, see <https://www.truenas.com/docs/scale/gettingstarted/install/consolesetupmenuscale/>².

If you want remote out-of-band management (OOBM) via IPMI, connect a network cable to the IPMI port. See section “[2 System Overview](#)” on page 2 to find your Mini IPMI port.

⚠ Warning - BIOS and IPMI Firmware

Your system is equipped with the optimal BIOS and IPMI firmware out of the box.
DO NOT UPGRADE your system’s BIOS and IPMI firmware.

We recommend that IPMI be on a separate and secure network without Internet access.
Please contact support if you need to upgrade your system’s BIOS or IPMI firmware.

```
The web user interface is at:
```

```
http://10.100.1.10
```

```
https://10.100.1.10
```

- 1) Configure network interfaces
- 2) Configure network settings
- 3) Configure static routes
- 4) Change local administrator password
- 5) Create one-time password for “root”
- 6) Reset configuration to defaults
- 7) Open TrueNAS CLI Shell
- 8) Open Linux Shell
- 9) Reboot
- 10) Shutdown

```
Enter an option from 1-10:
```



7 TrueNAS Web Interface

TrueNAS uses the Multicast DNS service, also known as Bonjour or mDNS, to make the system accessible on most networks without additional setup.

Open a web browser on another computer on the same network. Open the TrueNAS web interface by navigating to **truenas.local** (or your Mini IP address).

7.1 Connect to the TrueNAS Interface

The TrueNAS web interface uses default credentials for first-time logins:

Username: *admin*
Password: *abcd1234*

After logging in, change the admin account password in **Credentials > Local Users** to increase system security.

If you have more than one TrueNAS device connected to the network, mDNS can experience name conflicts.

To change the hostname in the web UI, go to **Network** and click **Settings** in the **Global Configuration** widget.

7.2 Out-of-Band-Management

Out-of-band logins have separate credentials from the TrueNAS web interface. The credentials are randomized and attached to the back of the TrueNAS Mini chassis. For more details, see <https://www.truenas.com/docs/sb-327>³.

For additional details about OOBM, see the Mini X+ Out-of-Band Management guide:

Mini X+: <https://www.truenas.com/docs/files/MiniX+OOBM25011.pdf>⁴

7.3 Change TrueNAS Versions

If you want to upgrade or run a different version of TrueNAS, you can find new and legacy versions at <https://www.truenas.com/download-truenas-community-edition>⁵ (SCALE).

After downloading your desired version, you must use image utility like balenaEtcher or Rufus to flash the ISO file to a USB drive. Plug the flashed USB drive into a USB port on your Mini and select it from the boot menu during system startup.

Follow the install instructions on our Documentation Hub.



8 Additional Resources

The TrueNAS Documentation Hub has complete software configuration and usage instructions. Click **Guide** in the TrueNAS web interface or go directly to:

<https://www.truenas.com/docs>⁷

Additional hardware guides and articles are in the Documentation Hub's Hardware section:

<https://www.truenas.com/docs/hardware>⁸

The TrueNAS Forums provide opportunities to interact with other TrueNAS users and discuss their configurations:

<https://forums.truenas.com/>⁹

9 Contact Us

Having issues? Please contact TrueNAS Enterprise Support to ensure a smooth resolution.

Contact Method	Contact Options
Web	https://www.truenas.com/support ¹⁰
Email	support@truenas.com
Telephone	Monday-Friday, 6:00AM to 6:00PM Pacific Standard Time: <ul style="list-style-type: none">• US-only toll-free: 1-855-473-7449 option 2• Local and international: 1-408-943-4100 option 2
Telephone	Telephone After Hours (24x7 Gold Level Support only): <ul style="list-style-type: none">• US-only toll-free: 1-855-499-5131• International: 1-408-878-3140 (International calling rates will apply)
Address	iXsystems, Inc. dba TrueNAS - 541 Division St, Campbell, CA 95008, USA

