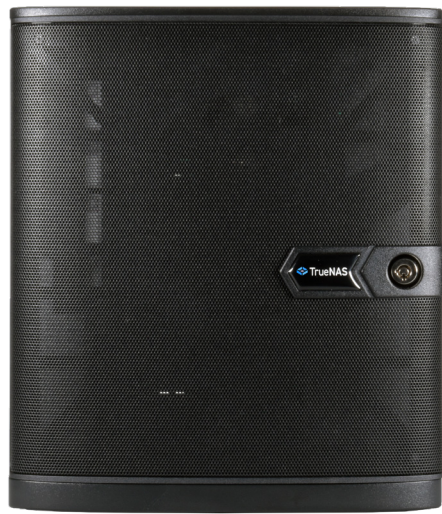


TrueNAS® Mini E

Out of Band Management



Contents

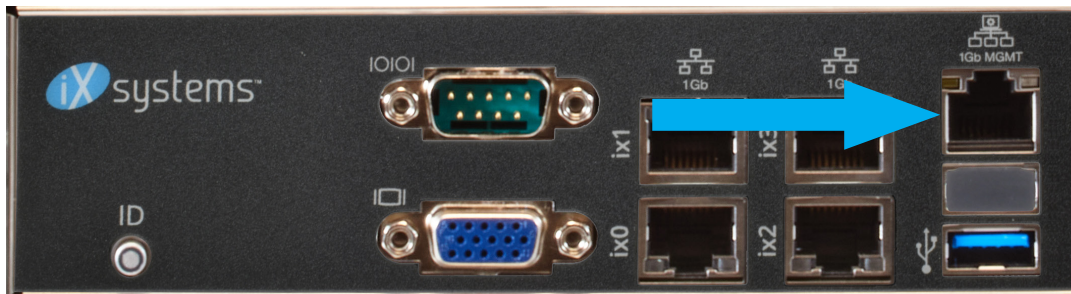
1	Access the BIOS	1
1.1	IPMI Options	2
1.2	DHCP Address Configuration	3
1.3	Configuring a Static IP Address	4
2	Logging in to the IPMI Web Interface	5
3	Contacting iXsystems	6

Copyright © 2021 iXsystems, Inc. All rights reserved. All trademarks are the property of their respective owners.

This document contains instructions for configuring out-of-band management from the BIOS, if needed. When the hardware supports IPMI, the TrueNAS web interface also has IPMI configuration options. For more details, see <https://www.truenas.com/docs/core/network/ipmi/>.

Out of Band Management enables remote control of the system. Administrative control options include powering the system on and off, resetting the configuration, and viewing the system log. Before attempting to configure TrueNAS for out-of-band management, ensure that the out-of-band management port is connected to an appropriate network. Refer to the TrueNAS Mini Basic Setup Guide included with your TrueNAS Mini for detailed instructions on how to connect to physical ports on the system.

Connect the out-of-band management port before powering on the TrueNAS Mini. You might also need to connect a monitor and keyboard to the system.



1 Access the BIOS

Press Delete at the splash screen while the TrueNAS Mini is booting to access the system BIOS.

```
Aptio Setup Utility - Copyright (C) 2019 American Megatrends, Inc.
Main Advanced Security Boot Event Logs Server Mgmt Exit

UEFI Version      : C3338D2I-4L P1.00
BMC Version       : 1.00.00

Processor Type    : Intel(R) Atom(TM) CPU C3338
@ 1.50GHz
Processor Speed   : 1500MHz
Microcode Update  : 506F1/0000002E
L1 Cache Size    : 56KB
L2 Cache Size    : 2048KB

Total Memory      : 8GB, Single-Channel
Memory Mode
DDR4_A1           : R-DIMM 8GB (DDR4-1866)
DDR4_A2           : None

System Date      : [Fri 04/10/2020]

Set the Date. Use Tab to switch between Date elements.
Default Ranges:
Year: 2005-2099
Months: 1-12
Days: dependent on month

←→: Select Screen
↑↓: Select Item
Enter: Select
+/-: Change Option
F1: General Help
F7: Discard Changes
F9: Load UEFI Defaults
F10: Save and Exit
ESC: Exit

Version 2.19.1266. Copyright (C) 2019 American Megatrends, Inc.
AB
```

1.1 IPMI Options

Select the **Server Mgmt** tab and open the **BMC Network Configuration** options.

```
Aptio Setup Utility - Copyright (C) 2019 American Megatrends, Inc.
Main  Advanced  Security  Boot  Event Logs  Server Mgmt  Exit

BMC Self Test Status    PASSED
Wait For BMC            [Enabled]
Inventory support       [Enabled]
▶ System Event Log
▶ BMC Network Configuration

Configure BMC network
parameters

↔: Select Screen
↑↓: Select Item
Enter: Select
+/-: Change Option
F1: General Help
F7: Discard Changes
F9: Load UEFI Defaults
F10: Save and Exit
ESC: Exit

Version 2.19.1266. Copyright (C) 2019 American Megatrends, Inc.
AB
```

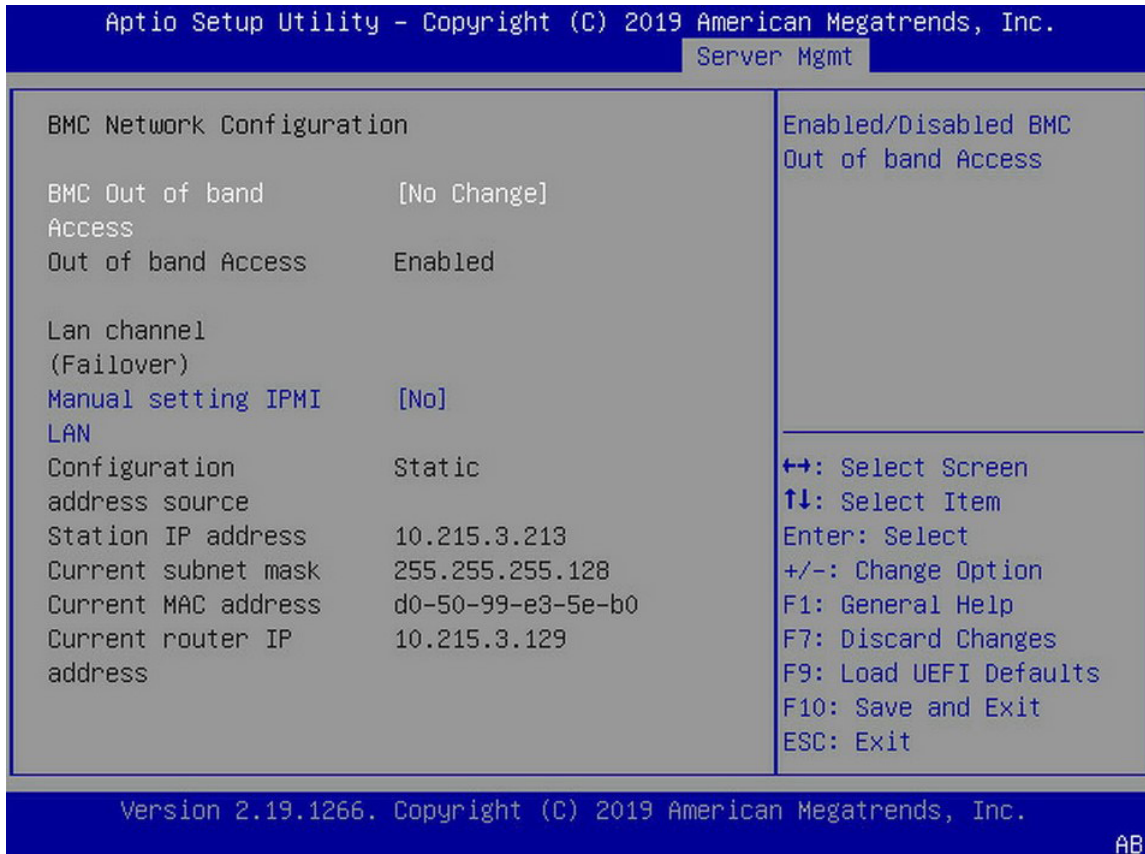
1.2 DHCP Address Configuration

Set **Out of band Access** to *Enabled*. Set the **Manual setting IPMI** to *No* to assign the out-of-band management IP address dynamically. The menu shows any IP addresses that have been assigned by DHCP.

```
Aptio Setup Utility - Copyright (C) 2019 American Megatrends, Inc.
Server Mgmt
BMC Network Configuration
BMC Out of band Access [No Change]
Out of band Access Enabled
Lan channel (Failover)
Manual setting IPMI LAN [No]
Configuration address source Static
Station IP address 10.215.3.213
Current subnet mask 255.255.255.128
Current MAC address d0-50-99-e3-5e-b0
Current router IP address 10.215.3.129
Enabled/Disabled BMC Out of band Access
+↔: Select Screen
↑↓: Select Item
Enter: Select
+/-: Change Option
F1: General Help
F7: Discard Changes
F9: Load UEFI Defaults
F10: Save and Exit
ESC: Exit
Version 2.19.1266. Copyright (C) 2019 American Megatrends, Inc.
AB
```

1.3 Configuring a Static IP Address

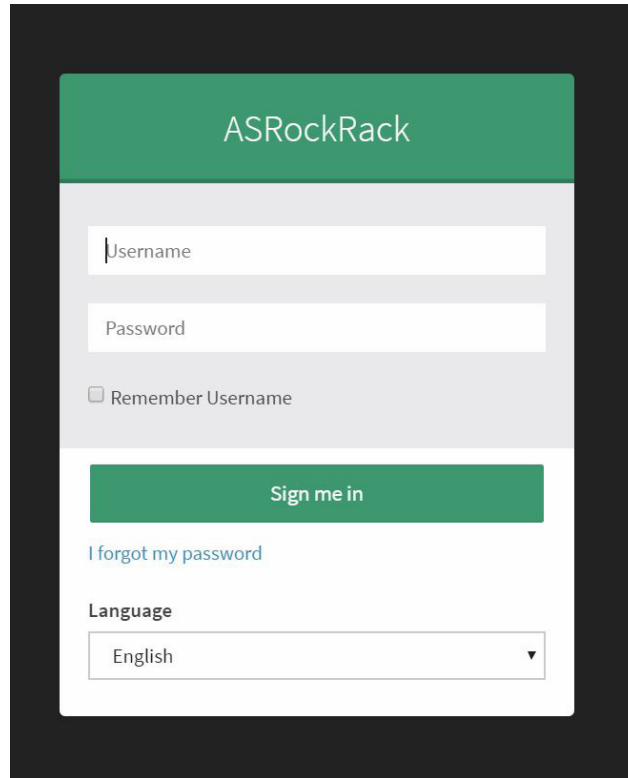
Set **Out of band Access** to *Enabled*. Set the **Manual setting IPMI** to *Yes* to manually assign the out-of-band management IP address. Enter the correct values for the **Station IP address**, **Current subnet mask**, and **Current router IP** fields to assign a static IP address for out-of-band management. Be sure to completely fill all four octets for the **Station IP address**.



Save the changes, exit the BIOS, and allow the system to boot.

2 Logging in to the IPMI Web Interface

Connect to the TrueNAS Mini out-of-band management port by entering the IP address into a web browser from a system that is either within the same network or which is directly wired to the array. A login prompt appears.



Log in using the default credentials:

Username: ADMIN

Passwords are randomized for security. Check the sticker on the back of the system for your unique IPMI password. See <https://www.truenas.com/docs/sb-327> for more details.

3 Contacting iXsystems

For assistance, please contact iXsystems Support:

Contact Method	Contact Options
Web	https://support.ixsystems.com
Email	support@ixsystems.com
Telephone	Monday-Friday, 6:00AM to 6:00PM Pacific Standard Time: <ul style="list-style-type: none">• US-only toll-free: 1-855-473-7449 option 2• Local and international: 1-408-943-4100 option 2
Telephone	Telephone After Hours (24x7 Gold Level Support only): <ul style="list-style-type: none">• US-only toll-free: 1-855-499-5131• International: 1-408-878-3140 (International calling rates will apply)