

TrueNAS E60 Storage Expansion Shelf

Basic Setup & Deployment



TrueNAS®

V 1.0



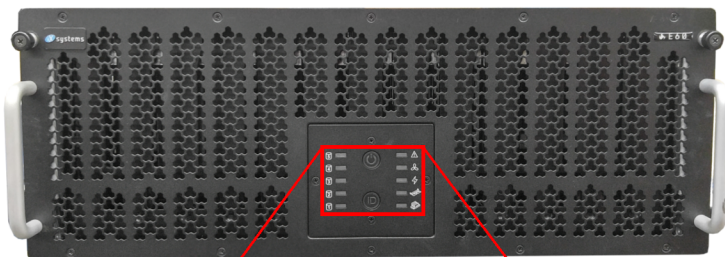
Step 1. Check the contents of the box. Confirm that your package contains the following:

#	Description	Image / Description	Qty
1	TrueNAS E60 Expansion Shelf		1
2	Drive Trays		60
3	Power Cables		2
4	SAS Cables		2*
5	Rail Kit		1
6	This Guide		1

* More than two SAS cables may be included, depending on your order

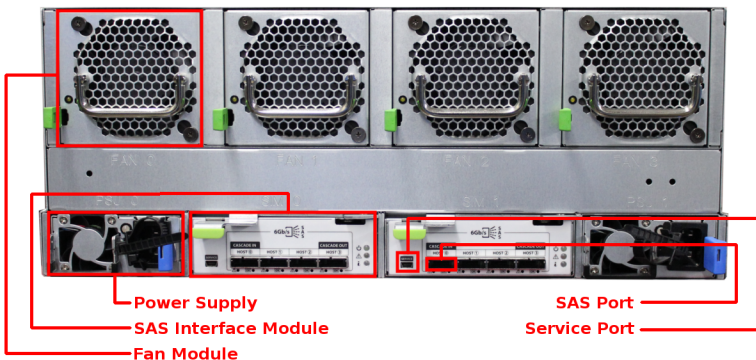
Note: If your TrueNAS E60 Expansion Shelf arrived in less than pristine condition, immediately take pictures and contact iXsystems Support. To contact iXsystems Support, email truenas-support@ixsystems.com and have your TrueNAS E60 Expansion Shelf serial number ready (located on the rear of the system).

Step 2. Get familiar with the system.

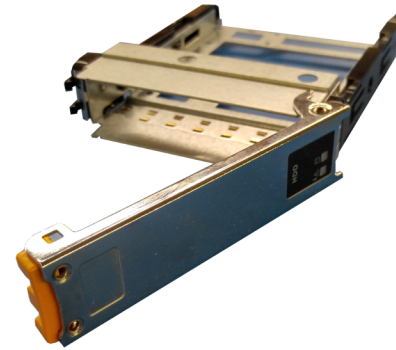


HDD Bank 5
HDD Bank 4
HDD Bank 3
HDD Bank 2
HDD Bank 1
Power Button
System Status
Fan Status
PSU Status
SIM Status
ISIM Status
ID Button

Front view of the E60 Expansion Shelf



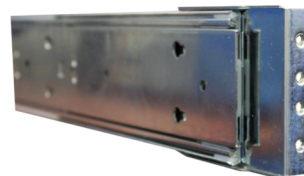
Rear view of the E60 Expansion Shelf



System Drive Tray

Note: Do not install drives yet. It is safer to load the drives after the chassis has been installed in the rack.

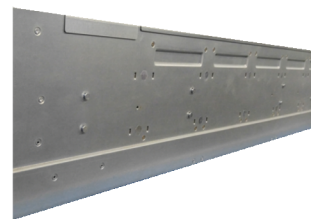
Step 3. Install rack mounting rails. The rail set and screws are supplied in the Rail Kit box. Use only the screws labeled for use in the type of rack you have. With two people, mount each rail to the rack using the top and bottom screw holes. The rail surface should remain inside of the rack boundaries. The following images show the front and rear of the rails mounted correctly as well as proper rail installation.



Front View



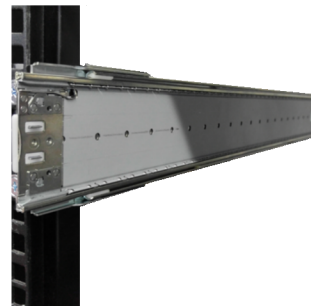
Rear View



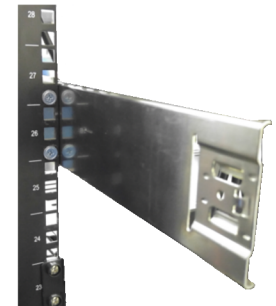
Side View - No Rail



Side View - Rail Mounted



Rack Rail - Front



Rack Rail - Rear



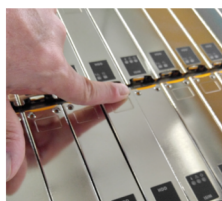
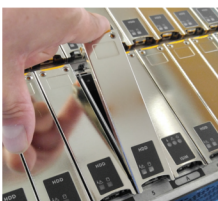
Step 4. Install the E60 Expansion Shelf in the rack. With two people, align the chassis rails with the rails installed in the rack and slowly slide the chassis into the rack until it stops. Press in the slide locks to allow the rack to slide in the rest of the way until the face of the E60 is flush with the rack.



Step 5. Attach the Expansion Shelf to the front of the rack. Press in and turn the built-in thumbscrews to the front of the rack.



Step 6. Install the drives in the expansion shelf. After installing your expansion shelf, insert the drives. To insert a drive, release the handle with the tab on the front of the drive chassis, push it into a drive bay until the drive handle begins to move into place, then push it the rest of the way in with the handle until the handle locks into place.



Note: Drives are not numbered and may be installed in any available bay.

Step 7. Plug In the SAS cables. Follow the wiring guide on the back page of this guide according to the configuration you chose.

Step 8. Plug in the Power Cables. Using the power cables provided, plug both power cables into appropriate power outlets and secure the cables with the plastic cable locks.

Note: Service and management ports are not used during normal operation and should not be connected.



Power Supply
Power Socket and Plastic Cable Locks

Step 9. Turn on the Expansion Shelf.

After all the power and data connections have been set up, turn on the Expansion Shelf by pressing the power button on the front of the unit.



Note: If setting up a TrueNAS Storage Array for the first time, wait two minutes after turning on the Expansion Shelf before powering on the TrueNAS Array. If you already have a TrueNAS Array in operation, you may power on the Expansion Shelf at any time.

Note: See the wiring diagrams on the back page of this guide for all basic wiring options. Refer to your system and the porting option you chose.

For TrueNAS Documentation:

The complete TrueNAS Admin Guide is available by selecting **Guide** from within the TrueNAS UI

If you require assistance, contact your TrueNAS Support Representative:

8x5: 1 (855) 473-7449 option 2 (US only toll-free); +1 (408) 943-4100 option 2

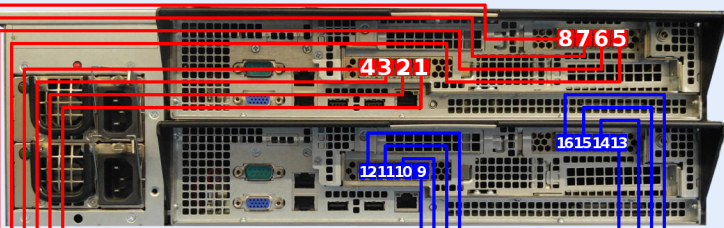
Email: truenas-support@ixsystems.com

After Hours (24x7 Gold Level Support Only):

1 (855) 699-1531 (US only toll-free); +1 (678) 835-6101 (local and international)



Z35 Wide Ported



TrueNAS Z35 - Rear



Expansion Shelf A



Expansion Shelf B

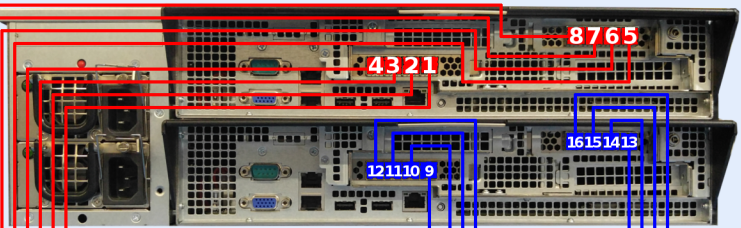


Expansion Shelf C

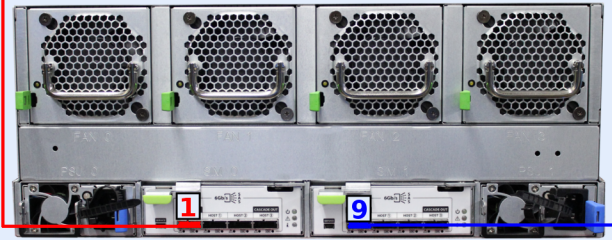


Expansion Shelf D

Z35 Single Ported



TrueNAS Z35 - Rear



Expansion Shelf A



Expansion Shelf B



Expansion Shelf C



Expansion Shelf D



Expansion Shelf E



Expansion Shelf F



Expansion Shelf G



Expansion Shelf H