

.MFG file is the MFG management firmware without FAN monitoring support
.FW file is the main firmware

Firmware/MFG and WWN update utility:

ftp://ftp.supermicro.nl/utility/ExpanderXtools_Lite/Windows/SMC%20ExpanderXtoolsLite%20v1.5_Window.zip

also attached is the procedure for updating the Firmware and MFG

Because the firmware update for the LSI EXPANDER CHIP is from LSI it mostly only compatible with LSI CHIP based controllers

You MUST follow this procedure EXACTLY otherwise the backplane will fail and cannot be recovered

it is highly recommended to remove all harddrives from the backplane and connect only one backplane when updating the firmware

Please use the below link to download the latest firmware fw_55.14.18.0.

<https://ufile.io/nhwhz>

NOTE: This firmware change only apply on the backplane with the revision ending with 'A'. For example, BPN-SAS2-826EL1 rev1.01A.

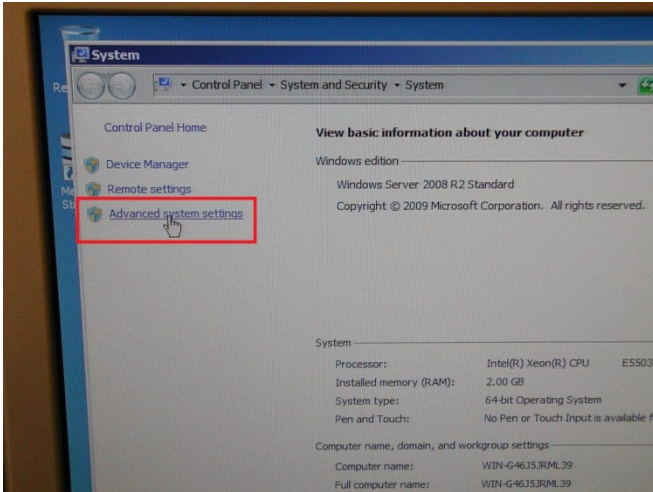
For BPNSAS2-826EL1 (Rev. 1.01).

Please use the below link to download the latest firmware fw_55.14.18.0.

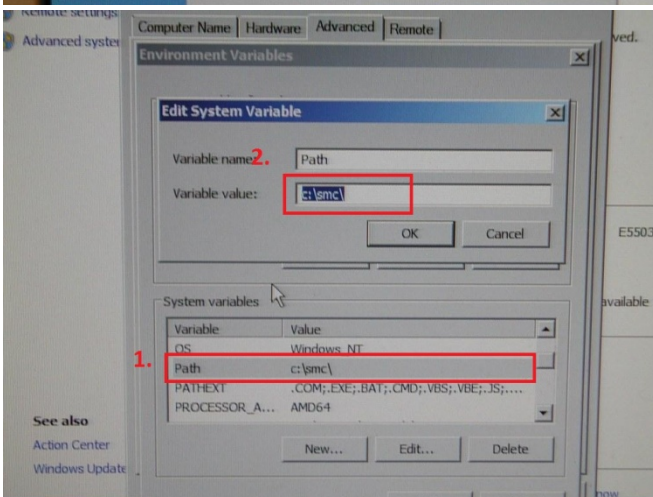
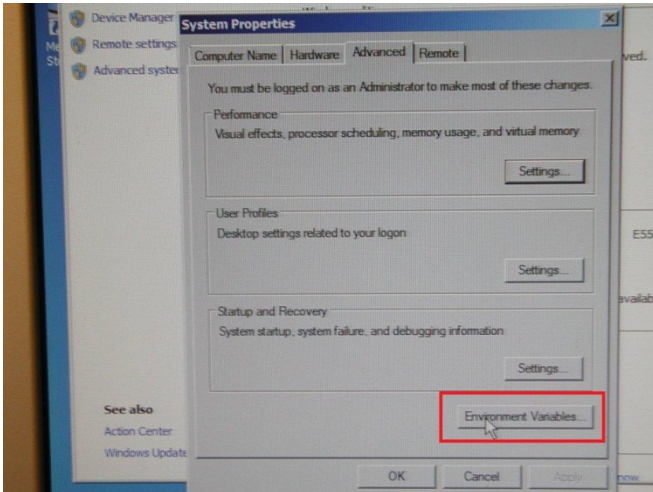
<https://ufile.io/yyswl>

SAS2 expander backplane firmware update

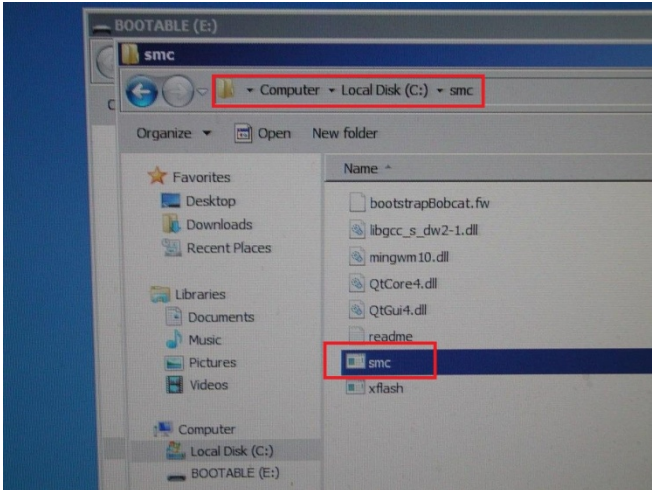
1. Please setup the utility folder as following.



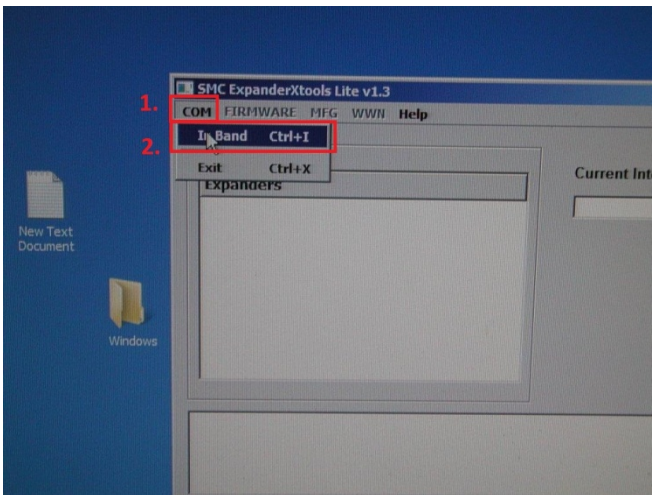
2. Please look path and change folder to where you put the utility.



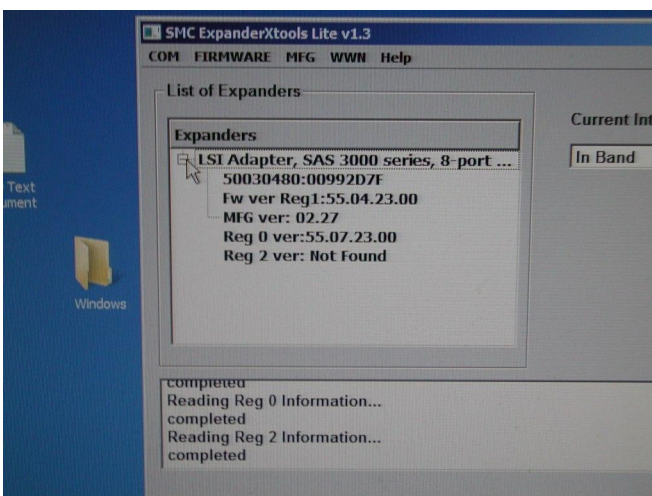
3. After finish path setting, please start to run flash utility.



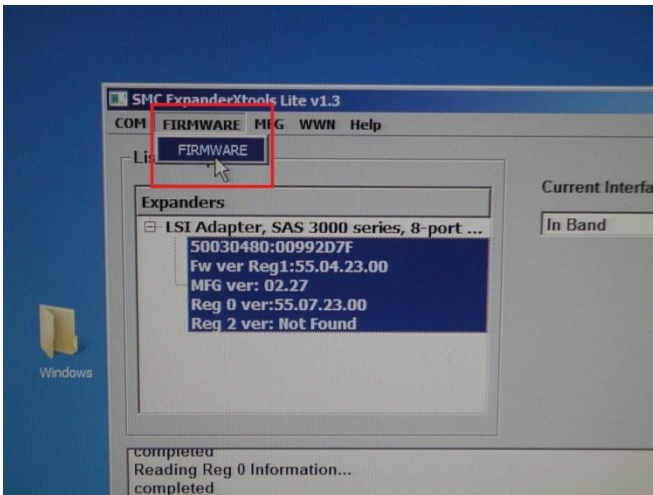
4. Please choose COM to link expander backplane board



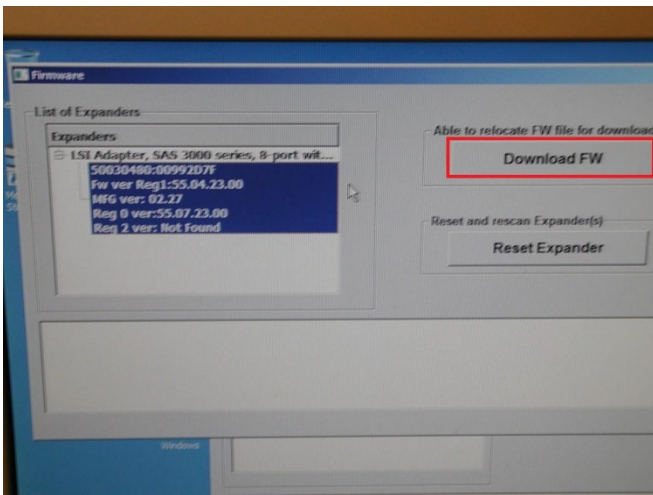
Will show all information



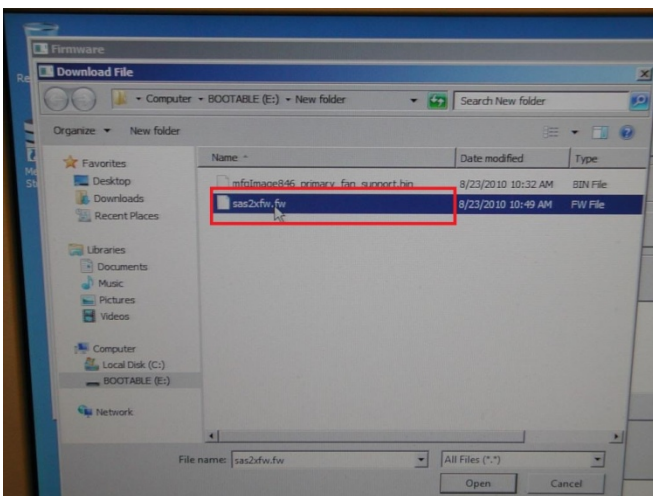
5. Please choose and start updates the firmware.



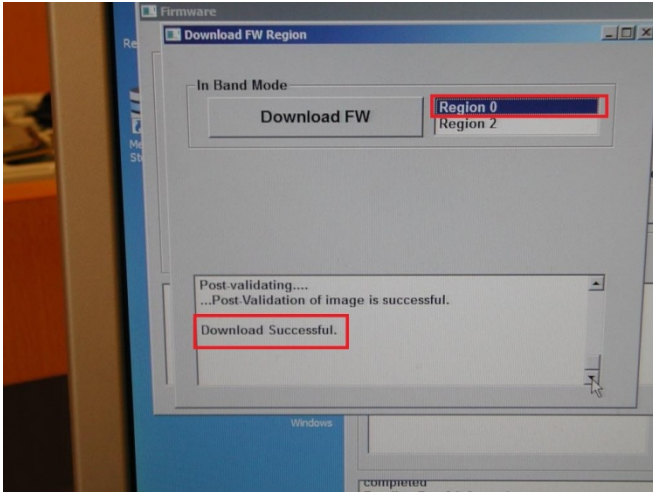
Download firmware



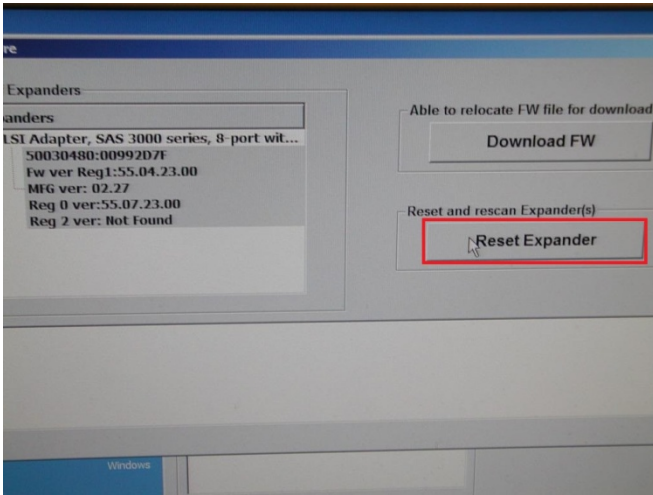
Choose new firmware from USB device



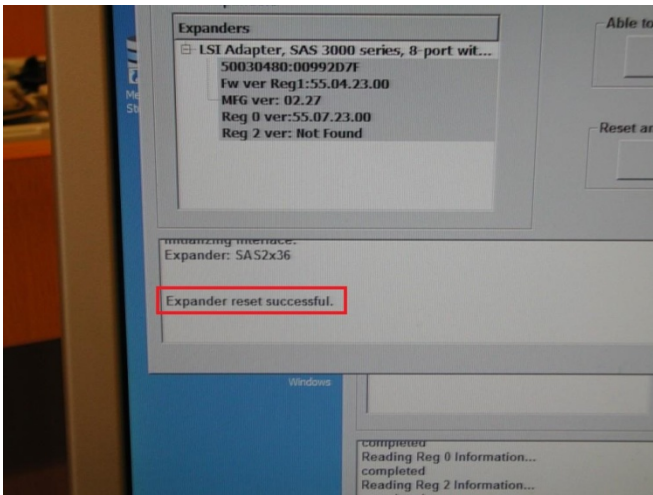
Region 0 → Expander chip 1 ; Region 2 → Expander chip 2
After download finish will see download successful



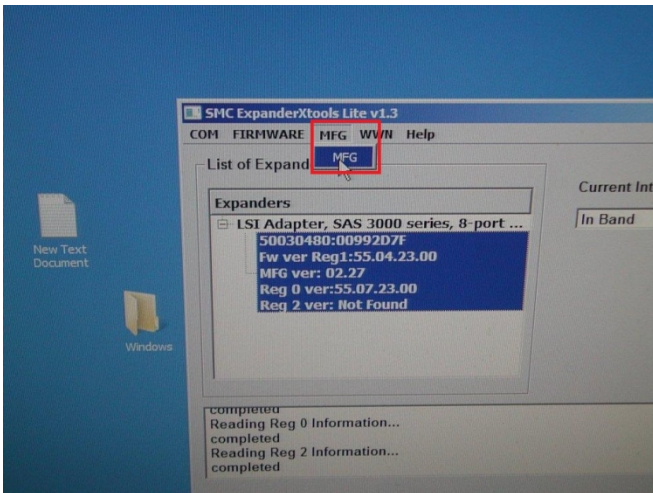
Close and click reset expander



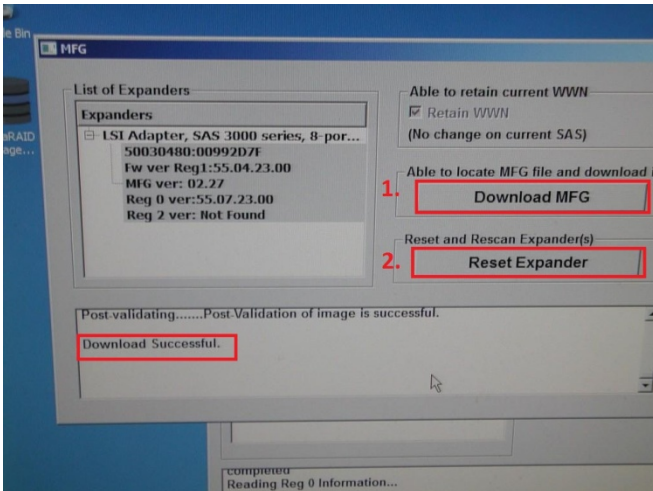
After finish update will see expander reset successful.



6. Update MFG firmware (same procedure as firmware)



- 1) Download MFG firmware
- 2) After finish download please reset expander



7. After finish all firmware update please re-run utility to check all firmware are install.