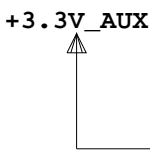
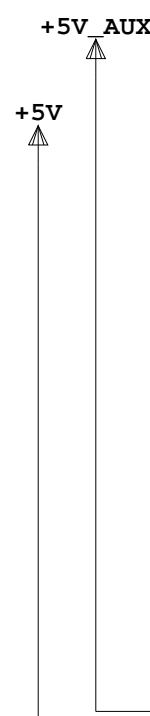
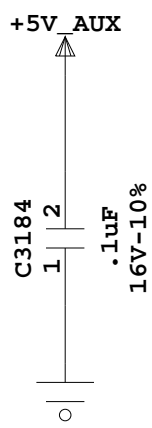
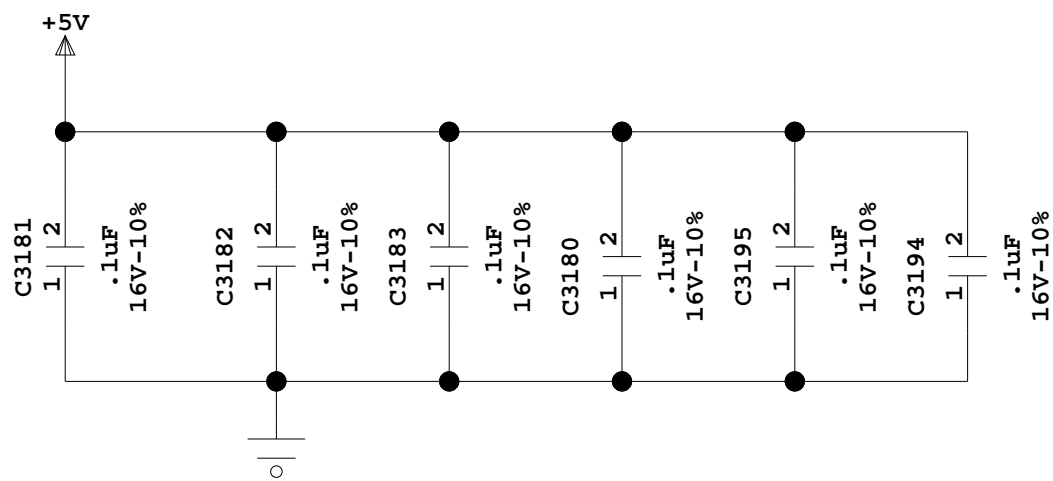
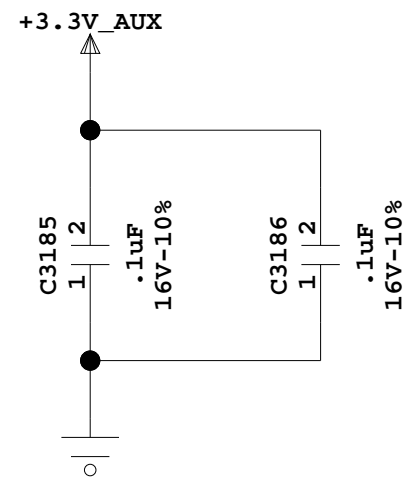
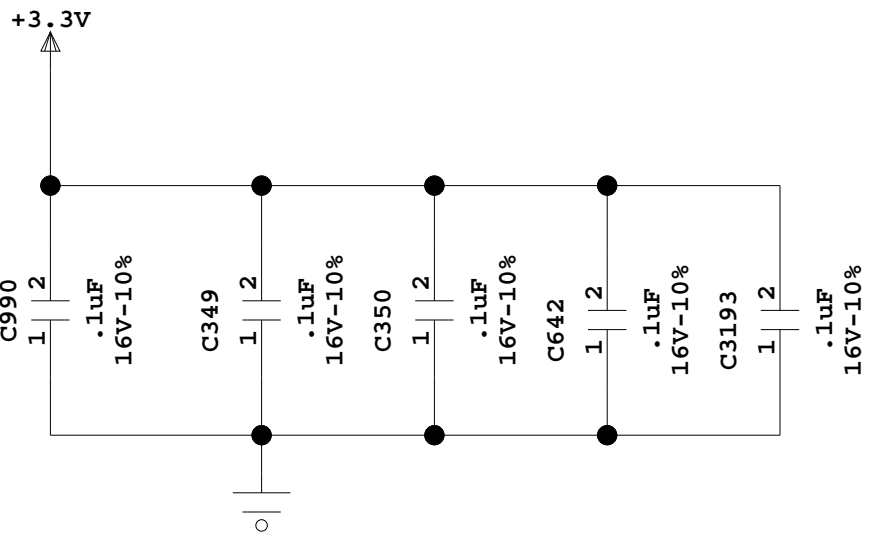
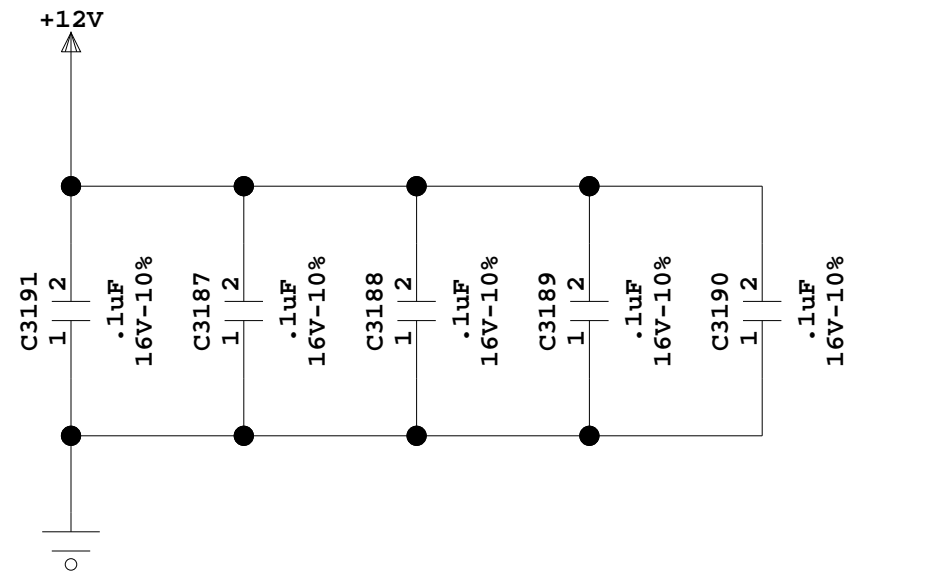


PCI EXPRESS GOLDFINGER CONNECTOR



ROOM=PCIE_ROMB

PROPRIETARY NOTE: THIS ITEM IS THE PROPERTY OF DELL INC. ROUND ROCK, TEXAS AND CONTAINS CONFIDENTIAL AND TRADE SECRET INFORMATION. THIS ITEM MAY NOT BE TRANSFERRED FROM THE CUSTODY OF DELL INC. EXCEPT AS AUTHORIZED BY DELL INC., AND THEN ONLY BY WAY OF LOAN FOR LIMITED PURPOSES. IT MUST NOT BE REPRODUCED IN WHOLE OR IN PART AND MUST BE RETURNED TO DELL INC. UPON REQUEST AND IN ALL EVENTS UPON COMPLETION OF THE PURPOSE OF THE LOAN. NEITHER THIS ITEM OR THE INFORMATION IT CONTAINS MAY BE USED BY OR DISCLOSED TO PERSONS NOT HAVING A NEED FOR SUCH USE OR DISCLOSURE CONSISTENT WITH THE PURPOSE OF THE LOAN WITHOUT THE PRIOR WRITTEN CONSENT OF DELL INC.

NOT STANDARD PCI EXPRESS PINOUT (TRIATHLON SPECIFIC)

For IDE contingency

was CK_100M_ROMB_P/N

DELL INC. ROUND ROCK, TEXAS	
TITLE SCHEM,RSR,PE1950 ,SV,DELL,V2	
DWG NO. WJ021	REV. A00
DATE 6/13/2006	SHEET 5 OF 10