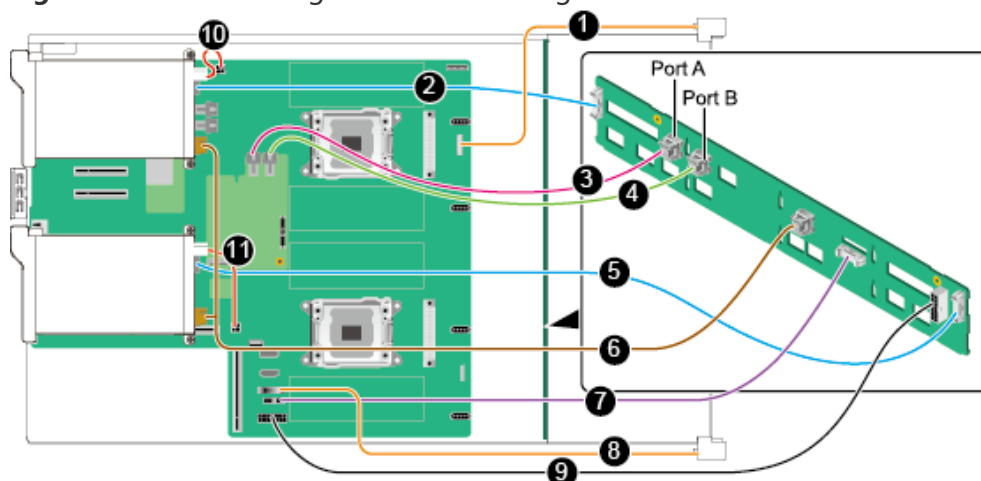


# Internal Cabling for 12-Drive Configuration

## Internal Cabling for 12-Drive Configuration 1

One RAID controller card and four rear drives:

**Figure 1** Internal cabling for 12-drive configuration 1



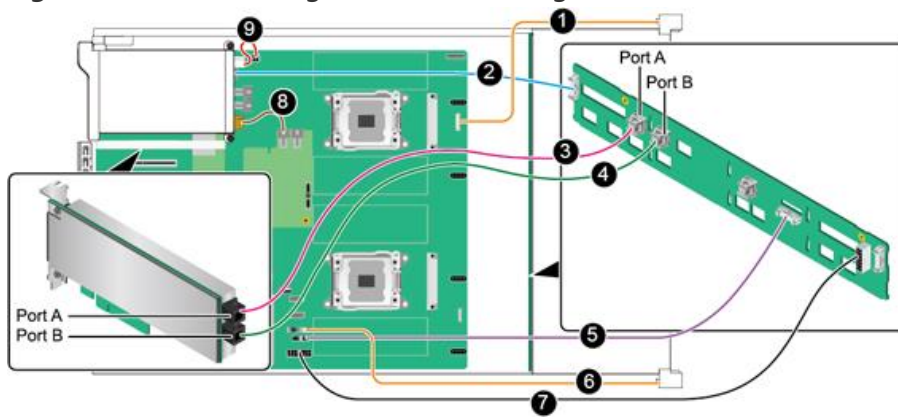
No.	Description
1	Signal cable for connecting the indicator plate of the right mounting ear to the mainboard
2	Signal cable for connecting the front drive backplane (J32) to the rear drive backplane (J2)
3	SAS cable for connecting Port A (J28) of the front drive backplane to Port A of the RAID controller card on the mainboard
4	SAS cable for connecting Port B (J29) of the front drive backplane to Port B of the RAID controller card on the mainboard
5	Signal cable for connecting the front drive backplane (J35) to the rear drive backplane (J2)
6	<p>SAS cable for connecting the front drive backplane (J31) to the rear drive backplane (J3)</p> <p><b>NOTE:</b> This cable is a 1-to-2 cable. One end of the cable is connected to the front-drive backplane and the other end with two connectors is connected to the rear-drive backplane. The cable must be connected along the PSU side in the chassis. The cable length limit prevents cable connection errors on the drive backplane.</p> <p>If this cable is incorrectly connected, a drive error alarm is generated on the iBMC WebUI</p>
7	Signal cable for connecting the front drive backplane (J1) to the mainboard (J1003)
8	Signal cable for connecting the USB plate of the left mounting ear to the mainboard (J42)

No.	Description
9	Power cable for connecting the front drive backplane (J24) to the mainboard (J30 PWR C
10	Power cable for connecting the rear drive backplane (J1) to the mainboard (J28 PWR CON
11	Power cable for connecting the rear drive backplane (J1) to the mainboard (J29 PWR CON

## Internal Cabling for 12-Drive Configuration 2

Two RAID controller cards and two rear drives:

**Figure 2** Internal cabling for 12-drive configuration 2

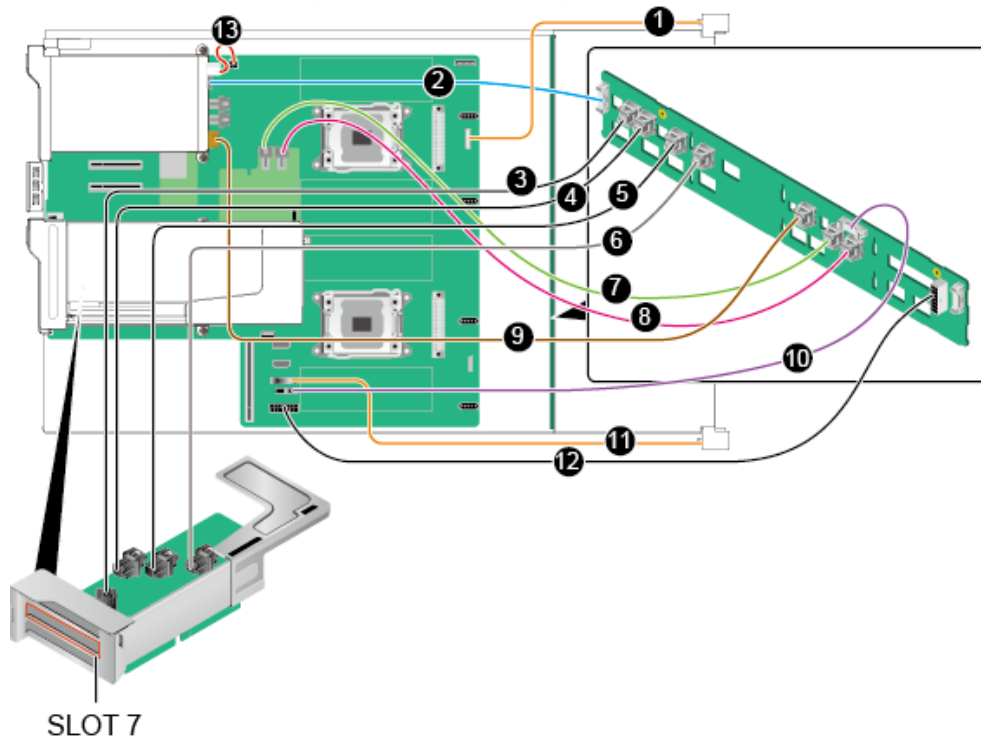


No.	Description
1	Signal cable for connecting the indicator plate of the right mounting ear to the mainboard
2	Signal cable for connecting the front drive backplane (J32) to the rear drive backplane (J2)
3	SAS cable for connecting Port A (J28) of the front drive backplane to Port A of the standard controller card
4	SAS cable for connecting Port B (J29) of the front drive backplane to Port B of the standard controller card
5	Signal cable for connecting the front drive backplane (J1) to the mainboard (J1003)
6	Signal cable for connecting the USB plate of the left mounting ear to the mainboard (J42)
7	Power cable for connecting the front drive backplane (J24) to the mainboard (J30 PWR C
8	SAS cable for connecting the rear drive backplane (J3) to the Port A of the RAID controller card
9	Power cable for connecting the rear drive backplane (J1) to the mainboard (J28 PWR CON

## Internal Cabling for 12-Drive Configuration 3

One RAID controller card, four NVMe PCIe SSDs, and two rear drives:

**Figure 3** Internal cabling for 12-drive configuration 3



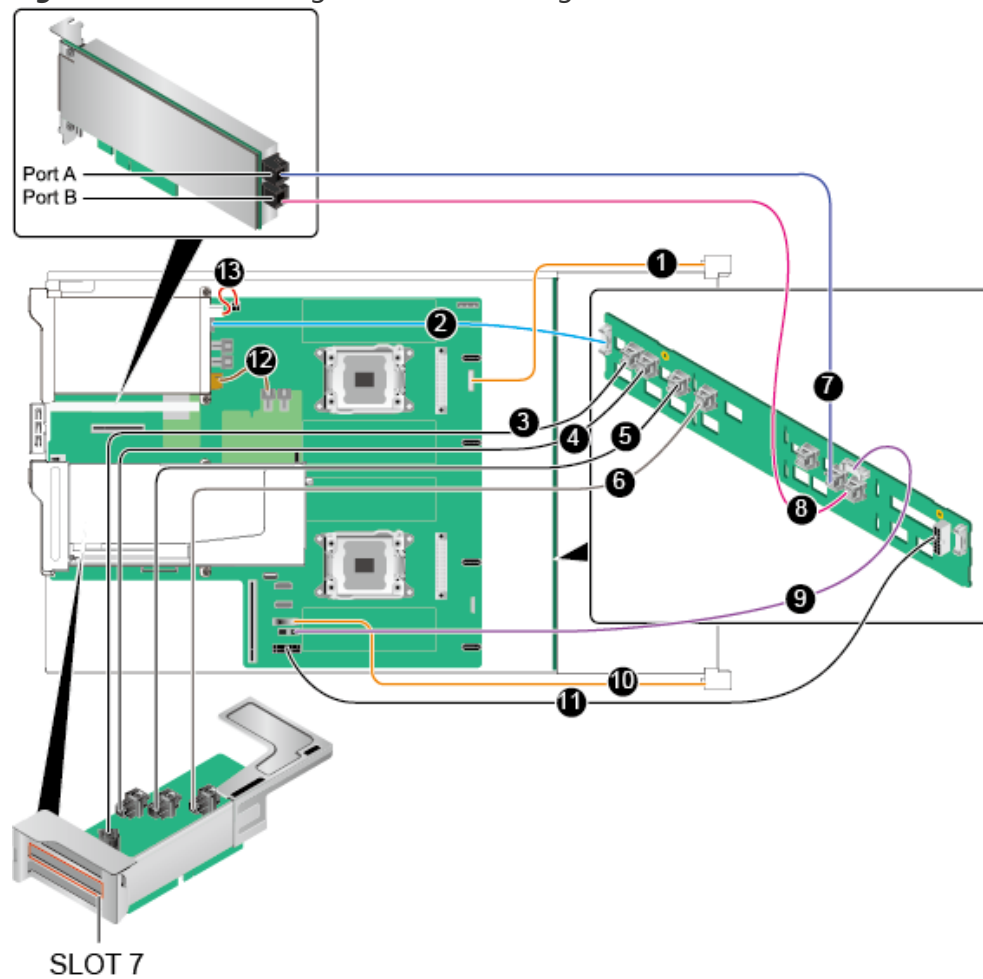
No.	Description	NVMe PCIe SSD Slot N
1	Signal cable for connecting the indicator plate of the right mounting ear to the mainboard (J43)	-
2	Signal cable for connecting the front drive backplane (J32) to the rear drive backplane (J24)	-
3	SAS cable for connecting an NVMe PCIe SSD adapter to the drive backplane (Port 3-Port 3)	11
4	SAS cable for connecting an NVMe PCIe SSD adapter to the drive backplane (Port 2-Port 2)	10
5	SAS cable for connecting an NVMe PCIe SSD adapter to the drive backplane (Port 1-Port 1)	9

No.	Description	NVMe PCIe SSD Slot N
6	SAS cable for connecting an NVMe PCIe SSD adapter to the drive backplane (Port 0-Port 0)	8
7	SAS cable for connecting Port A (J28) of the front drive backplane to Port A of the RAID controller card on the mainboard	-
8	SAS cable for connecting Port B (J29) of the front drive backplane to Port B of the RAID controller card on the mainboard	-
9	SAS cable for connecting the front drive backplane (J31) to the rear drive backplane (J3)	-
10	Signal cable for connecting the front drive backplane (J1) to the mainboard (J1003)	-
11	Signal cable for connecting the USB plate of the left mounting ear to the mainboard (J42)	-
12	Power cable for connecting the front drive backplane (J24) to the mainboard (J30 PWR CONN1)	-
13	Power cable for connecting the rear drive backplane (J1) to the mainboard (J29 PWR CONN3)	-

## Internal Cabling for 12-Drive Configuration 4

Two RAID controller cards, four NVMe PCIe SSDs, and two rear drives:

**Figure 4** Internal cabling for 12-drive configuration 4



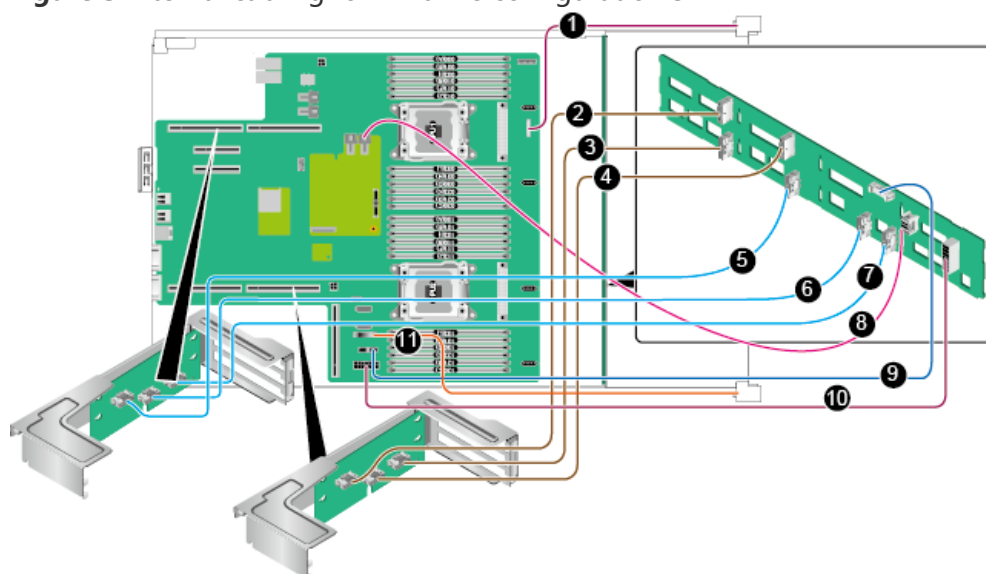
No.	Description	NVMe PCIe SSD Slot N
1	Signal cable for connecting the indicator plate of the right mounting ear to the mainboard (J43)	-
2	Signal cable for connecting the front drive backplane (J32) to the rear drive backplane (J24)	-
3	SAS cable for connecting an NVMe PCIe SSD adapter to the drive backplane (Port 3-Port 3)	11
4	SAS cable for connecting an NVMe PCIe SSD adapter to the drive backplane (Port 2-Port 2)	10
5	SAS cable for connecting an NVMe PCIe SSD adapter to the drive backplane (Port 1-Port 1)	9

No.	Description	NVMe PCIe SSD Slot N
6	SAS cable for connecting an NVMe PCIe SSD adapter to the drive backplane (Port 0-Port 0)	8
7	SAS cable for connecting Port A (J28) of the front drive backplane to Port A of the standard RAID controller card	-
8	SAS cable for connecting Port B (J29) of the front drive backplane to Port B of the standard RAID controller card	-
9	Signal cable for connecting the front drive backplane (J1) to the mainboard (J1003)	-
10	Signal cable for connecting the USB plate of the left mounting ear to the mainboard (J42)	-
11	Power cable for connecting the front drive backplane (J24) to the mainboard (J30 PWR CONN1)	-
12	SAS cable for connecting the rear drive backplane (J3) to the Port A of the RAID controller card on the mainboard	-
13	Power cable for connecting the rear drive backplane (J1) to the mainboard (J28 PWR CONN2)	-

## Internal Cabling for 12-Drive Configuration 5

One RAID controller card and eight to twelve NVMe PCIe SSDs:

**Figure 5** Internal cabling for 12-drive configuration 5



No.	Description	NVMe PCIe SSD Slot N
1	Signal cable for connecting the indicator plate of the right mounting ear to the mainboard (J43)	-
2	SAS cable for connecting 12-drive NVMe SSD adapter (Port C) to the front drive backplane (Port 2C)	<ul style="list-style-type: none"> <li>• 10</li> <li>• 11</li> </ul>
3	SAS cable for connecting 12-drive NVMe SSD adapter (Port A) to the front drive backplane (Port 2A)	<ul style="list-style-type: none"> <li>• 6</li> <li>• 7</li> </ul>
4	SAS cable for connecting 12-drive NVMe SSD adapter (Port B) to the front drive backplane (Port 2B)	<ul style="list-style-type: none"> <li>• 8</li> <li>• 9</li> </ul>
5	SAS cable for connecting 12-drive NVMe SSD adapter (Port C) to the front drive backplane (Port 1C)	<ul style="list-style-type: none"> <li>• 4</li> <li>• 5</li> </ul>
6	SAS cable for connecting 12-drive NVMe SSD adapter (Port B) to the front drive backplane (Port 1B)	<ul style="list-style-type: none"> <li>• 2</li> <li>• 3</li> </ul>
7	SAS cable for connecting 12-drive NVMe SSD adapter (Port A) to the front drive backplane (Port 1A)	<ul style="list-style-type: none"> <li>• 0</li> <li>• 1</li> </ul>

No.	Description	NVMe PCIe SSD Slot N
8	SAS cable for connecting Port A of the front drive backplane to Port B of the RAID controller card	-
9	Signal cable for connecting the front drive backplane (J1) to the mainboard (J1003)	-
10	Power cable for connecting the front drive backplane (J24) to the mainboard (J30 PWR CONN1)	-
11	Signal cable for connecting the USB plate of the left mounting ear to the mainboard (J42)	-

#### NOTE

On the RAID controller card screen, slots 4 to 7 for RAID controller cards map to slots 0 to 3 for drives.